

Vigor167 35b VDSL2 Modem Quick Start Guide

Version: 1.3_UK

Region: United Kingdom & Ireland

Firmware Version: V5.2.5

For updates and support, visit www.draytek.co.uk

Date: Dec. 09, 2024

Note: Product specification is subject to continuous evolution which may not always be reflected in current documentation. For the formal specification and details of the supported features of your product, please refer only to the web site at www.draytek.co.uk

Intellectual Property Rights (IPR) Information

Copyrights	© All rights reserved. This publication contains information that is protected by copyright. No part may be reproduced, transmitted, transcribed, stored in a retrieval system, or translated into any language without written permission from the copyright holders.
Trademarks	<p>The following trademarks are used in this document:</p> <ul style="list-style-type: none">● Microsoft is a registered trademark of Microsoft Corp.● Windows 8, 10, 11 and Explorer are trademarks of Microsoft Corp.● Apple and Mac OS are registered trademarks of Apple Inc.● Other products may be trademarks or registered trademarks of their respective manufacturers.

Safety Instructions and Approval

Safety Instructions	<ul style="list-style-type: none">● Read the installation guide thoroughly before you set up the modem.● The modem is a complicated electronic unit that may be repaired only by authorized and qualified personnel. Do not try to open or repair the modem yourself.● Do not place the modem in a damp or humid place, e.g. a bathroom.● Do not stack the modem on top of other electronics.● The modem should be used in a sheltered area, within a temperature range of 0 to +40 Celsius.● Do not expose the modem to direct sunlight or other heat sources. The housing and electronic components may be damaged by direct sunlight or heat sources.● Do not deploy the cable for LAN connection outdoor to prevent electronic shock hazards.● Do not power off the router when saving configurations or firmware upgrades. It may damage the data in a flash. Please disconnect the Internet connection on the router before powering it off when a TR-069/ ACS server manages the router.● Keep the package out of reach of children.● When you want to dispose of the modem, please follow local regulations on conservation of the environment.
Warranty	<p>We warrant to the original end user (purchaser) that the modem will be free from any defects in workmanship or materials for a period of two (2) years from the date of purchase from a DrayTek authorized dealer in the UK/Ireland. Please keep your purchase receipt in a safe place as it serves as proof of date of purchase. During the warranty period, and upon proof of purchase, should the product have indications of failure due to faulty workmanship and/or materials, we will, at our discretion, repair or replace the defective products or components, without charge for either parts or labour, to whatever extent we deem necessary to restore the product to proper operating condition. Any replacement will consist of a new or re-manufactured functionally equivalent product of equal value, and will be offered solely at our discretion. This warranty will not apply if the product is modified, misused, tampered with, damaged by external factors, used with unapproved accessories or subjected to abnormal working conditions. Warranty applies to hardware only, not software or firmware. Defects which do not significantly affect the usability of the product will not be covered by the warranty. We reserve the right to revise the manual and online documentation and to make changes from time to time in the contents hereof without obligation to notify any person of such revision or changes.</p>



EU Declaration of Conformity

Hereby, DrayTek Corporation declares that the equipment type Vigor167 is in compliance with EU EMC Directive 2014/30/EU, Low Voltage Directive 2014/35/EU and RoHS 2011/65/EU. The full text of the EU Declaration of Conformity is available at the following internet address:

<https://fw.draytek.com.tw/Vigor167/Document/CE/>

- Product name: 35b Modem
- Model number: Vigor167
- Manufacturer: DrayTek Corp.
- Address: No.26, Fushing Rd., Hukou, Hsinchu Industrial Park, Hsinchu 303, Taiwan



Declaration of Conformity

Hereby, DrayTek Corporation declares that the equipment type Vigor167 is in compliance with The Electromagnetic Compatibility Regulations 2016 (SI 2016 No.1091), The Electrical Equipment (Safety) Regulations 2016 (SI 2016 No.1101), and The Restriction of the Use of Certain Hazardous Substances in Electrical and Electronic Equipment Regulations 2012 (SI 2012 No. 3032). The full text of the EU Declaration of Conformity is available at the following internet address:

<https://fw.draytek.com.tw/Vigor167/Document/CE/>

- Product name: 35b Modem
- Model number: Vigor167
- Manufacturer: DrayTek Corp.
- Address: No.26, Fushing Rd., Hukou, Hsinchu Industrial Park, Hsinchu 303, Taiwan

UK PSTI STATEMENT OF COMPLIANCE

We, DrayTek Corp., office at No.26, Fushing Rd., Hukou, Hsinchu Industrial Park, Hsinchu 303, Taiwan, declare under our sole responsibility that the product

The full text of the PSTI Declaration of Conformity is available at the following internet address:

<https://fw.draytek.com.tw/UK/PSTI/>

- Product name: 35 Modem
- Model number: Vigor167
- Manufacturer: DrayTek Corp.
- Address: No.26, Fushing Rd., Hukou, Hsinchu Industrial Park, Hsinchu 303, Taiwan
- Importer: UK - CMS Distribution Limited, 15 Worship Street, London, EC2A 2DT
Ireland - CMS Distribution Limited, Bohola Road, Kiltimagh, Co Mayo, Ireland

is in conformity with the relevant UK Statutory Instruments: The Product Security and Telecommunications Infrastructure (Security Requirements for Relevant Connectable Products) Regulations 2023 ("Security Requirements").

Standard	Version
The Product Security and Telecommunications Infrastructure Regulations	2023 Schedule 1
Support Period	3 years after the EOS notification

Please note that this statement of compliance, including the Defined Support Period stated herein, is only applicable to products sold in the UK.

This Statement of Compliance is retained by DrayTek for 10 years after date of issue.

Hsinchu
(place)

19th Nov., 2024
(date)

Alan Wen
Chief Executive Officer, CEO
(Legal Signature)



Federal Communication Commission Interference Statement

This equipment has been tested and found to comply with the limits for a Class B digital device, pursuant to Part 15 of the FCC Rules. These limits are designed to provide reasonable protection against harmful interference in a residential installation.

This equipment generates, uses and can radiate radio frequency energy and, if not installed and used in accordance with the instructions, may cause harmful interference to radio communications. However, there is no guarantee that interference will not occur in a particular installation. If this equipment does cause harmful interference to radio or television reception, which can be determined by turning the equipment off and on, the user is encouraged to try to correct the interference by one of the following measures:

- Reorient or relocate the receiving antenna.
- Increase the separation between the equipment and receiver.
- Connect the equipment into an outlet on a circuit different from that to which the receiver is connected.
- Consult the dealer or an experienced radio/TV technician for help.

This device complies with Part 15 of the FCC Rules. Operation is subject to the following two conditions:

- (1) This device may not cause harmful interference, and
- (2) This device may accept any interference received, including interference that may cause undesired operation.

USA Local Representative	Company name	VLC Distribution Inc			
	Address	16255 Port NW Drive Suite 150			
	ZIP Code	77041	E-mail	lora.tourelles@vlcdistribution.com	
	Contact Person	Lora Tourelles	Tel.	713-856-7252	



Join the UK mailing list

Users in the UK & Ireland can sign up to our mailing list which goes out approximately 4 times per year with products news, updates, hints & tips and offers. For details, please visit www.draytek.co.uk/list

Firmware & Tools Updates

Due to the continuous evolution of DrayTek technology and emerging risks, router firmware updates may be issued. Please consult the DrayTek web site for more information on newest firmware, tools and documents: www.draytek.co.uk (For UK/Ireland)

*The external power supply used for each product will be model dependent.

		1	2	3	4	5	6	7	8	9	10	11	12
A	Manufacturer	CWT	CWT	CWT	CWT	CWT	APD	APD	APD	APD	MOSO	MOSO	MOSO
B	Address	No. 222, Sec. 2, Nankan Rd., Lujhu Township, Taoyuan County 338, Taiwan	No. 222, Sec. 2, Nankan Rd., Lujhu Township, Taoyuan County 338, Taiwan	No. 222, Sec. 2, Nankan Rd., Lujhu Township, Taoyuan County 338, Taiwan	No. 222, Sec. 2, Nankan Rd., Lujhu Township, Taoyuan County 338, Taiwan	No. 222, Sec. 2, Nankan Rd., Lujhu Township, Taoyuan County 338, Taiwan	No. 5, Lane 83, Lung-Sou St., Taoyuan City 330, Taiwan	No. 5, Lane 83, Lung-Sou St., Taoyuan City 330, Taiwan	No. 5, Lane 83, Lung-Sou St., Taoyuan City 330, Taiwan	No. 5, Lane 83, Lung-Sou St., Taoyuan City 330, Taiwan	Sangtai Industrial Park, Guanwai Xiaobaimang Songbai Road, Nanshan District, 518108 Shenzhen, Guangdong, China	Sangtai Industrial Park, Guanwai Xiaobaimang Songbai Road, Nanshan District, 518108 Shenzhen, Guangdong, China	Sangtai Industrial Park, Guanwai Xiaobaimang Songbai Road, Nanshan District, 518108 Shenzhen, Guangdong, China
C	Model identifier	2ABB012F UK	2ABB018F UK	2ABL024F UK	2ABL030F UK	2ABN036F UK	WA-12M12FG	WB-18D12FG	WA-24Q12FG	WA-36A12FG	MS-V2000R120-024Q0-GB	MSS-V2500WR120-030E0-GB	V30-V3000R120-0-036T0-GB
		2ABB012F EU	2ABB018F EU	2ABL024F EU	2ABL030F EU	2ABN036F EU	WA-12M12FK	WB-18D12FK	WA-24Q12FK	WA-36A12FK	MS-V2000R120-024Q0-DE	MSS-V2500WR120-030E0-DE	V30-V3000R120-0-036T0-DE
D	Input voltage	100-240V	100-240V	100-240V	100-240V	100-240V	100-240V	100-240V	100-240V	100-240V	100-240V	100-240V	100-240V
E	Input AC frequency	50/60Hz	50/60Hz	50/60Hz	50/60Hz	50/60Hz	50/60Hz	50/60Hz	50/60Hz	50/60Hz	50/60Hz	50/60Hz	50/60Hz
	Output voltage DC	12.0V	12.0V	12.0V	12.0V	12.0V	12.0V	12.0V	12.0V	12.0V	12.0V	12.0V	12.0V
F	Output current	1.0A	1.5A	2.0A	2.5A	3.0A	1.0A	1.5A	2.0A	3.0A	2.0A	2.5A	3.0A
G	Output power	12.0W	18.0W	24.0W	30.0W	36.0W	12.0W	18.0W	24.0W	36.0W	24.0W	30.0W	36.0W
H	Average active efficiency	84.9%	86.2%	87.6%	87.8%	89.8%	83.7%	85.4%	88.6%	88.2%	87.8%	89.5%	89.3%
I	Efficiency at low load 10%	73.6%	78.0%	81.3%	83.3%	83.7%	74.5%	80.5%	86.4%	85.4%	85.4%	84.7%	87.7%
J	No-load power consumption	0.07W	0.07W	0.07W	0.07W	0.07W	0.07W	0.10W	0.07W	0.10W	0.10W	0.08W	0.10W

For more updates & information, please visit www.draytek.co.uk. The external power supply used for each product will be model dependent.

Table of Contents

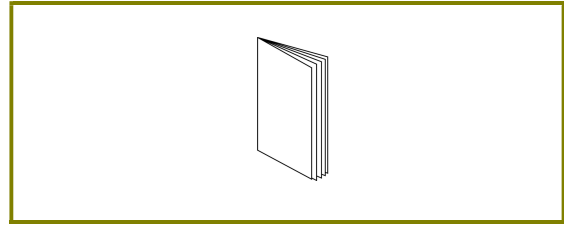
1. Package Contents	1
2. Panel Explanation.....	2
3. Hardware Installation	3
3.1 Network Connection	3
3.2 Wall-Mounted Installation.....	4
4. Software Configuration	5
5. Getting Further Help	9
5.1 Additional Feature Setup.....	9
5.2 Keep up to date with our mailing list.....	9
5.3 Firmware Updates	10
5.4 Security & Router Best Practice	10

1. Package Contents

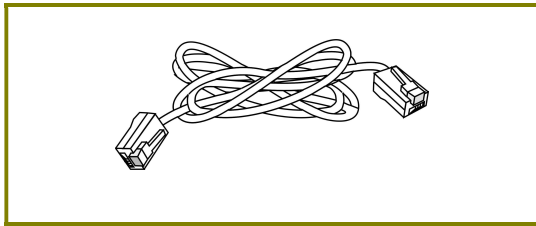
Take a look at the package contents. If there is anything missing or damaged, please contact DrayTek or your DrayTek reseller immediately.



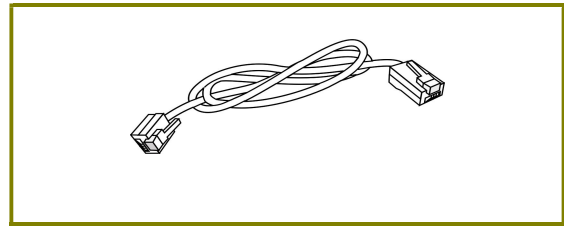
Modem



Quick Start Guide

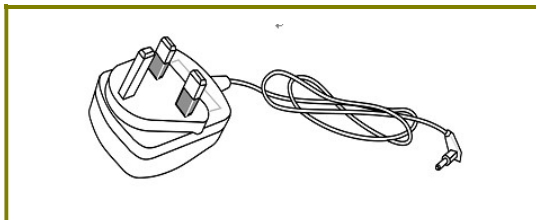


RJ-11 to RJ-45 Cable



RJ-11 to RJ-11 Cable

The type of the power adapter depends on the country that the modem will be installed. * The maximum power consumption is **4.5 Watt**.

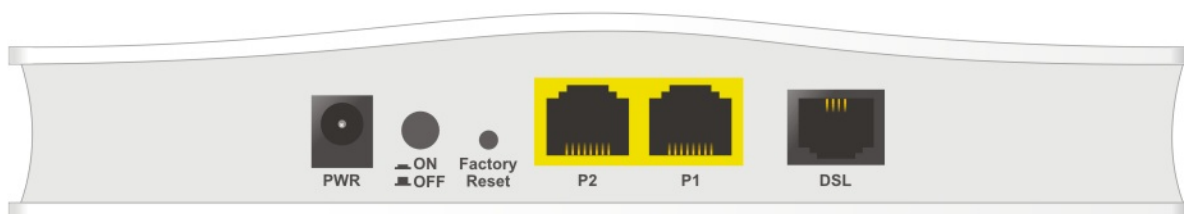


UK-type Power Adapter

2. Panel Explanation



LED	Status	Explanation
ACT	Off	The system is not ready or is failed.
	Blinking	The system is ready and can work normally.
P1/P2	On	A normal connection is through its corresponding port.
	Off	LAN is disconnected.
	Blinking	Data is transmitting (sending/receiving).
DSL	On	xDSL connection synchronized.
	Blinking	xDSL connection is synchronizing.



Interface	Description
PWR	Connector for a power adapter.
ON/OFF	ON/OFF: Power switch.
Factory Reset	Restore the default settings. Usage: Turn on the modem. Press the button and keep for more than 10 seconds. Then the modem will restart with the factory default configuration.
P2-P1	Connector for local networked devices.
DSL	Connector for accessing the Internet through xDSL.



Note

Remove the protective film from the modem before use to ensure ventilation.

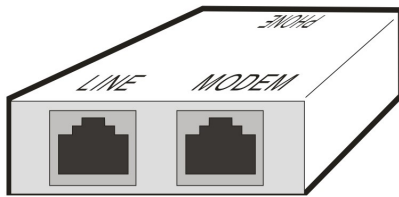
3. Hardware Installation

This section will guide you through the installation of the modem hardware. Once it is connected, proceed to the next section for final setup.

Before starting to configure the modem, you must connect your devices correctly.

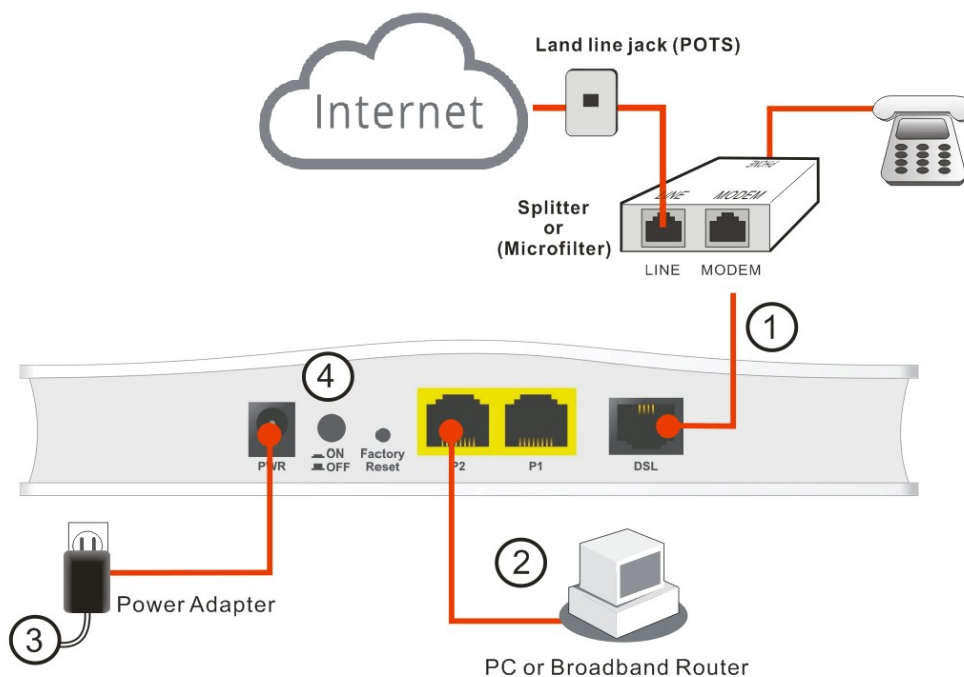
3.1 Network Connection

1. Connect the DSL interface to the MODEM port of your building's splitter or microfilter, with a DSL line cable.



(splitter)

2. Connect the LAN port to your computer with a RJ-45 cable.
3. Connect one end of the power adapter to the Power port of this device. Connect the other end to the wall outlet of electricity.
4. Power on the modem.
5. Check the POWER, ACT, LAN, DSL and INTERNET LEDs to assure network connections.

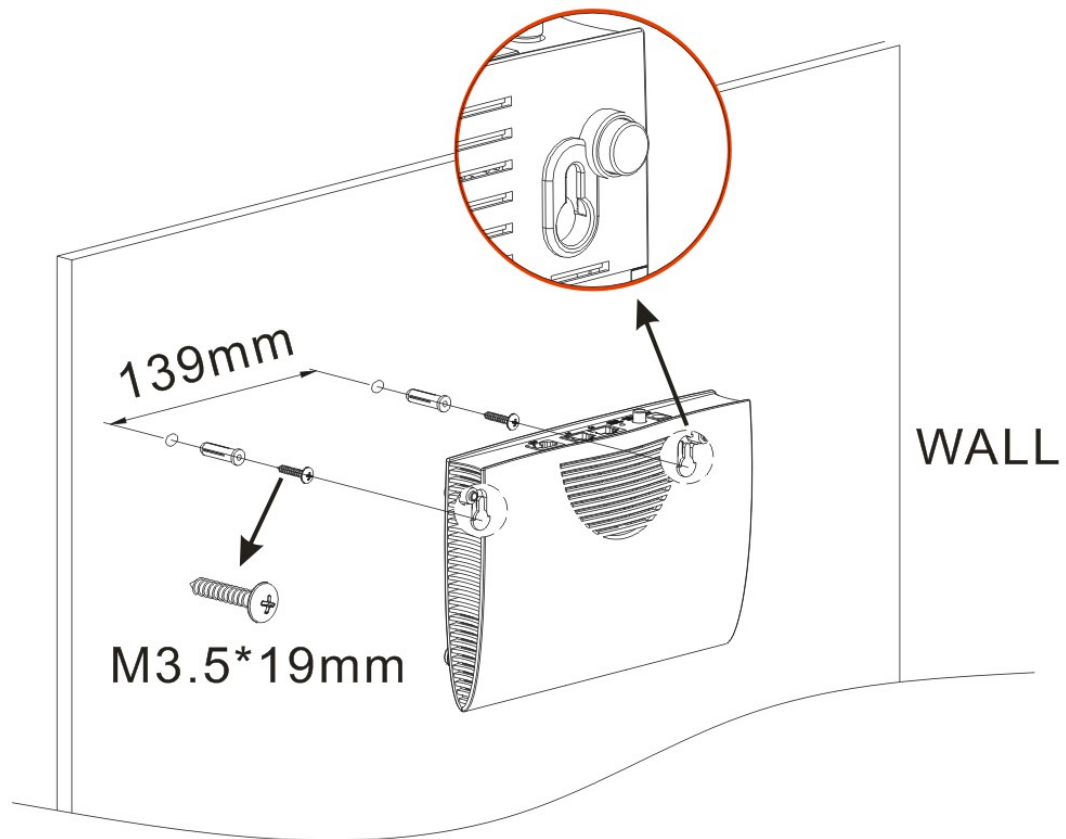


(For the detailed information of LED status, please refer to section 2.)

3.2 Wall-Mounted Installation

Vigor167 has keyhole type mounting slots on the underside.

1. Drill the holes on the wall according to the recommended instruction.
2. Fit screws into the wall using the appropriate type of wall plug.



Note

The recommended drill diameter shall be 6.5mm (1/4").

3. Once the mounting holes have been drilled and the wall-plugs & screws inserted, the modem can be hung onto the screw heads. This provides a secure mounting point for the modem.

4. Software Configuration

To use the Vigor 167 as your DSL modem with a router or PC, simply connect the modem to the VDSL or ADSL line and connect your router / PC to the Vigor 167's LAN port.

The Vigor 167 is a full-bridge modem, which will bridge ADSL and VDSL connections out of the box. Just configure the PPPoE or DHCP connection on your router / PC. Verify your router or PC is connected by checking the LAN P1 and P2 LEDs on the modem.

In its default 'modem' or 'bridge' mode, the Vigor 167 does not provide DHCP for local management, manually configure a PC to access its web interface.



Note

Configure the IP address of the computer to be within the same subnet. **The default IP address of Vigor 167 modem is 192.168.2.1, with a subnet mask of 255.255.255.0.**

For a full demonstration of how to configure an IP address manually, see this guide:

<https://www.draytek.co.uk/support/guides/kb-windows-fixedip>

To access the modem's web interface, open a web browser on your PC and type **http://192.168.2.1**. On the Vigor 167's login screen, enter "admin" as the Username and "admin" as the default Password. Then click **Login**.

DrayTek
Vigor167

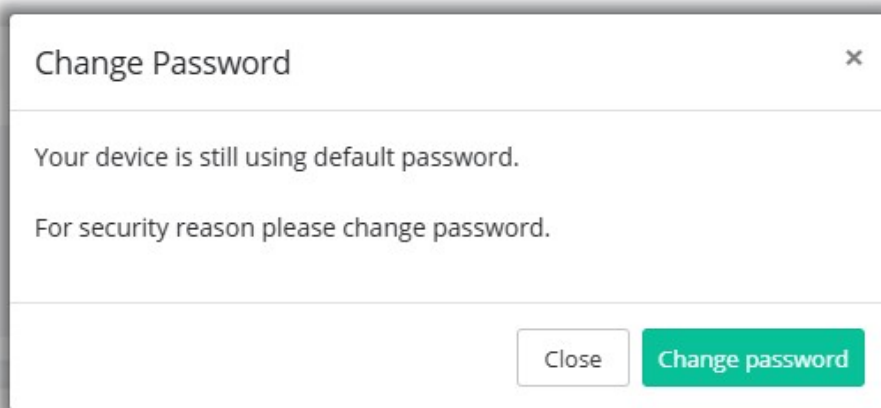
Username
admin

Password
.....

Locales
English

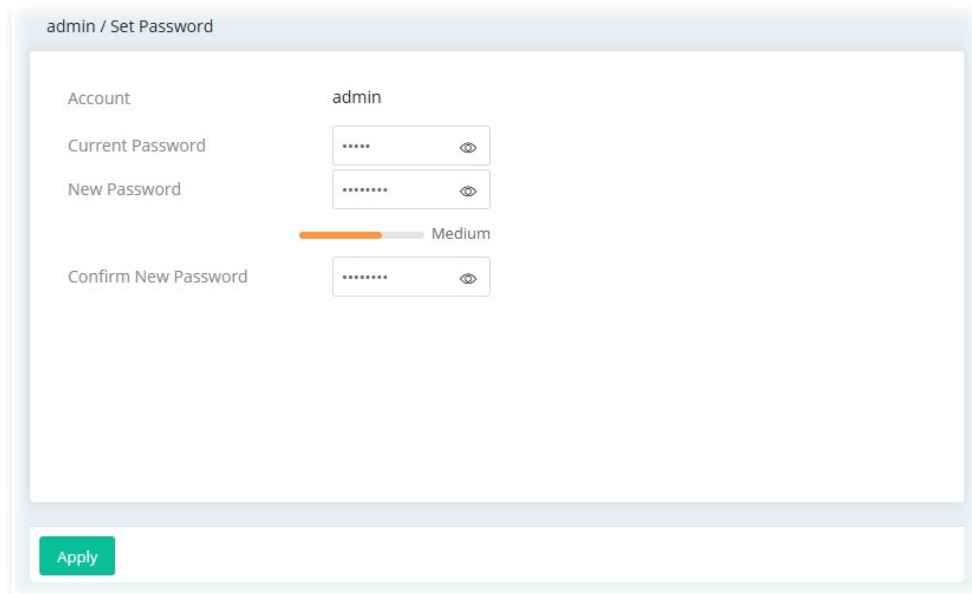
Login

Next, the page will appear to guide you change the login password.



A modal dialog box titled "Change Password" with a close button (X) in the top right corner. The text inside reads: "Your device is still using default password." followed by "For security reason please change password." At the bottom right, there are two buttons: "Close" and "Change password".

You **MUST** change the login password before accessing the web user interface. Please set a new password for network security.

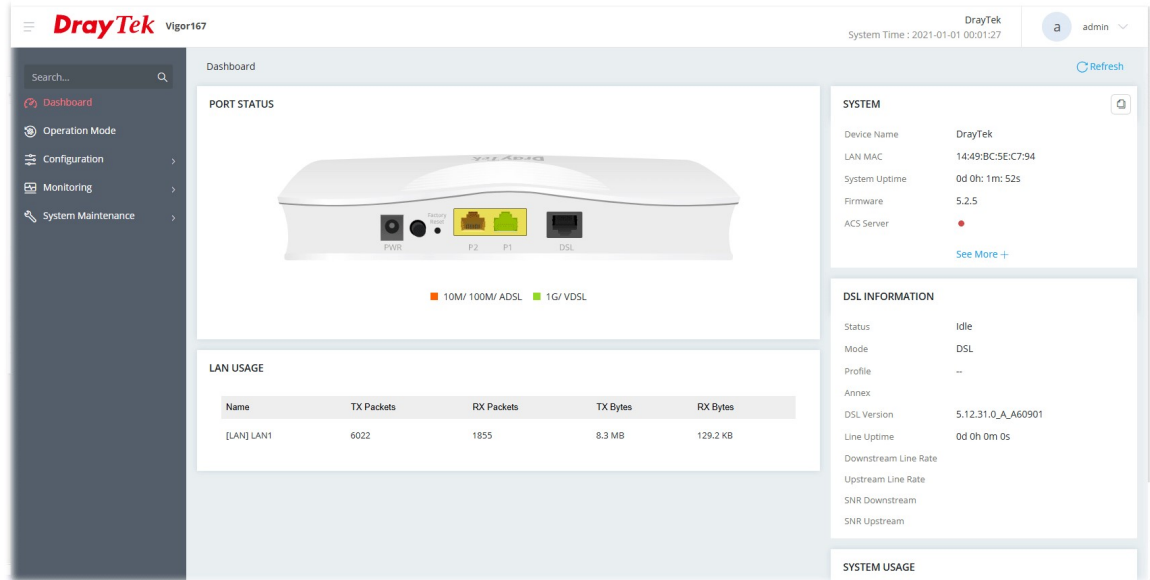


A web form titled "admin / Set Password". It contains the following fields and elements:

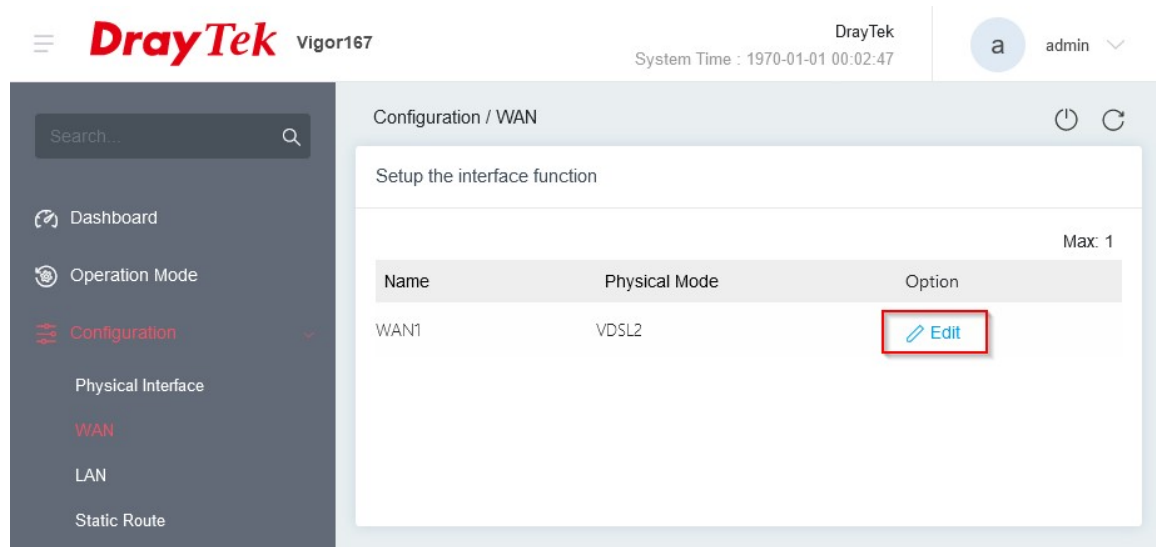
- Account:** A text field containing "admin".
- Current Password:** A password input field with a strength indicator icon (an eye with a slash).
- New Password:** A password input field with a strength indicator icon.
- Strength Indicator:** A horizontal bar with an orange segment on the left and a grey segment on the right, labeled "Medium".
- Confirm New Password:** A password input field with a strength indicator icon.
- Apply:** A green button at the bottom left.

After clicking **Apply**, wait a few seconds for the web interface to load, indicated by a red line at the top of the page.

This is the **[Dashboard]**, which displays the current status of the modem, with DSL details and port status information.



Open **[Configuration] > [WAN]**. Then click the **Edit** option:



This will expand the WAN1 settings panel. On this screen, configure the following settings:

ADSL Setting

- VPI: 0
- VCI: 38

VDSL2 Setting

- Service VLAN: Enabled
 - Tag: 101
 - Priority: 0

The screenshot shows the 'Configuration / WAN' interface. On the left, a table lists WAN interfaces. The 'WAN1' interface is selected, showing its 'Physical Mode' as 'VDSL2'. On the right, the 'WAN1' settings panel is expanded, showing various configuration options. The 'Enabled' toggle is turned on. The 'Name' is set to 'WAN1'. The 'DSL Mode' is set to 'Auto'. The 'ADSL Setting' section is collapsed. The 'Annex' is set to 'Auto'. The 'VPI (0~255)' is set to '0'. The 'VCI (32~65535)' is set to '38'. The 'Customer VLAN' toggle is turned off. The 'VDSL2 Setting' section is collapsed. The 'Customer VLAN' toggle is turned off. The 'Service VLAN' toggle is turned on. The 'Tag (0~4094)' is set to '101'. The 'Priority (0~7)' is set to '0'. At the bottom, there are 'Cancel' and 'Apply' buttons.

Name	Physical Mode
WAN1	VDSL2

Setup the interface function

Show Advanced Mode

Enabled ☒

Name WAN1

DSL Mode Auto

ADSL Setting

Annex Auto

VPI (0~255) 0

VCI (32~65535) 38

Customer VLAN ☐

VDSL2 Setting

Customer VLAN ☐

Service VLAN ☒

Tag (0~4094) 101

Priority (0~7) 0

Cancel Apply

Click **Apply** to apply the setting changes. The Vigor 167 modem is now ready to pass-through your Internet connection, to a connected PC, Router or Firewall.

On the device that you will be connecting to the Internet with, configure the WAN for DHCP/Static IP if your ISP provides a direct connection. Otherwise, configure a PPPoE connection on the device with the credentials supplied by your ISP to establish an Internet connection.

5. Getting Further Help

If the modem does not appear to be operating correctly or you cannot get online to the Internet, please visit our web site (www.draytek.co.uk) for further troubleshooting advice or to contact our support technicians. Always have your serial number to hand.

Users in the UK/Ireland using qualifying products should visit for support options including email support, telephone support, our help knowledgebase and access to the UK user support forums.

If you are **outside** of the UK/Ireland, please contact your own local supplier, email to support@draytek.com or visit www.draytek.com/support

For warranty service, in the first instance, please contact the support services, as listed above, for help in diagnosing or eliminating the problem or issue. The support department can arrange repair or service if then deemed necessary.

The standard Vigor 167 modem warranty is 'Return to base' (RTB) unless you have VigorCare which provides enhanced services (see www.draytek.co.uk/vigorcure).

You should keep your proof of purchase (original invoice) safely in case warranty or other service is ever required.

5.1 Additional Feature Setup

This is a quick setup guide to get you online with your new modem. For troubleshooting and more detailed setup instructions, check the DrayTek UK product knowledgebase.

The full user manual is available on the DrayTek UK Downloads page:

<https://www.draytek.co.uk/support/downloads>

The online knowledgebase has additional information on how to configure the modem's Internet connectivity pass-through and more advanced features:

<https://www.draytek.co.uk/support/product-knowledgebase>

5.2 Keep up to date with our mailing list

Now that you have your DrayTek product, you should keep up to date with product updates (firmware), security advisories and other product news, advice or special offers. Users in the UK/Ireland can subscribe to our mailing list. For details and to subscribe, please visit

In other countries or regions, please contact your local distributor/supplier for local options.

5.3 Firmware Updates

It is strongly recommended that you keep your modem firmware up to date with the latest version in order to have all of the latest security and feature improvements.

Always obtain firmware from official sources, i.e. (for UK/Ireland users).

There are two firmware file types:

.all - upgrade retaining all previous settings

.rst - upgrade and reset to factory default

It is recommended to take a configuration backup prior to upgrading the firmware.

5.4 Security & Router Best Practice

Your router is the gateway to an entire business network and data. Even the best security equipment requires correct usage in order to ensure that its features are effective.

There are many simple practices that every router & modem user should adopt to help reduce the risk to their network or business as well as some very common and simple mistakes that people habitually make - simple mistakes which could then be exploited by others.

We've produced our free guide "**Router Best Practice**" which contains essential information for anyone installing, configuring or using a broadband router or wireless LAN.

Available to download: <https://www.draytek.co.uk/best>